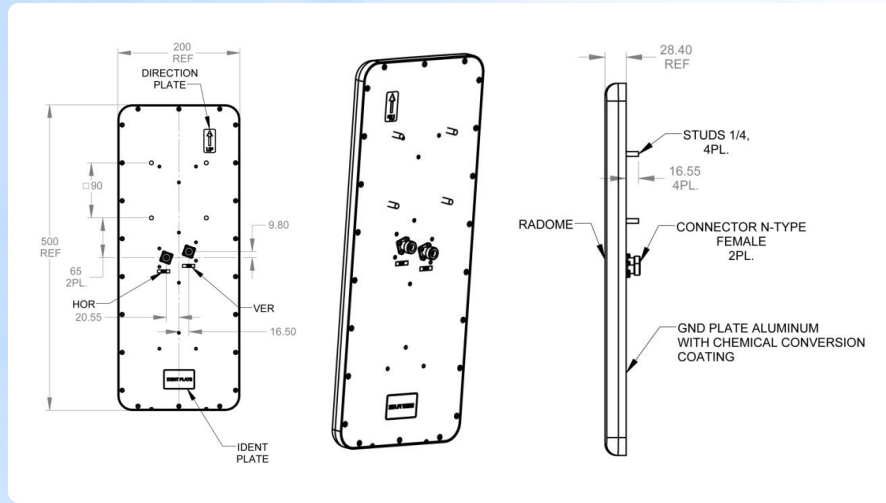


## 4.9 - 5.95 GHz Dual Polarity Antenna SA5-9014-DP

### 6 GHz, 14 dBi, 90° Sector Antenna



### Technical Specifications

<b>REGULATORY COMPLIANCE</b>	RoHS , CE 0682
<b>ELECTRICAL</b>	
FREQUENCY RANGE	4.9 – 5.95 GHz
GAIN	14dBi (min)
VSWR	2 :1 (max) 1.7 : 1 (typ)
Azimuth Beam Width	
Port V	90° (typ) @11dBi Gain
Port H	90° (typ) @10dBi Gain
3DB ELEVATION BEAM WIDTH	8° (typ)
POLARIZATION	Dual Linear Vertical + Horizontal
CROSS POLARIZATION	-25dB (typ) , -15dB (max)
F/B RATIO	25dB (min)
EL SIDE LOBES LEVEL	-10dB (typ)
PORT TO PORT ISOLATION	30dB (min)
INPUT IMPEDANCE	50 Ω
INPUT POWER	20W (max)
LIGHTNING PROTECTION	DC Grounded

<b>MECHANICAL</b>	
DIMENSIONS ( L X W X D )	500 x 200 x 30 mm (max)
WEIGHT	1.5 kg (max)
CONNECTOR	2 x N-type female
BASE PLATE	Aluminum with chemical conversion coating
RADOME	Plastic
RADOME THICKNESS	2.0 ± 0.2 mm
OUTLINE DRAWING	RD42850600C
<b>MOUNTING KIT</b>	MT-120025
<b>ENVIRONMENTAL</b>	
LOW TEMPERATURE	-55°C
HIGH TEMPERATURE	+71°C
TEMP. CYCLING	-45°C +70°C
VIBRATION	Random 4M5
SHOCK MECHANICAL	4M5
HUMIDITY	95%
WATER TIGHTNESS	IP67
FLAMMABILITY	Class HB
ICE AND SNOW	25mm Radial
WIND SPEED SURVIVAL OPERATION	220 Km/h, 160 Km/h
Wind Load (Survival):	
Front Thrust	26.8 kg
Side Thrust	1.3 kg

## ABOUT PROXIM WIRELESS:

Proxim Wireless is a global leader in advanced wireless broadband and WiFi solutions that deliver high performance and high availability communications. Celebrating 40 years of pioneering wireless solutions, Proxim is recognized for unparalleled reliability, superior performance, and drive for innovation.

© 2023 Proxim Wireless Corporation. All rights reserved. Proxim is a registered trademark and the Proxim logo is a trademark of Proxim Wireless Corporation. All other trademarks mentioned herein are property of their respective owners. Specifications are subject to change without notice.